

Haz

HazFlood Goliath 2100/al



FEATURES

- 70-175w HID.
- Compact design for maximum mounting flexibility.
- Field replaceable, thermal shock resistant tempered glass lens.
- High temperature silicone gasket provides a watertight seal.
- Tool less entry via eight positive locking stainless steel latches.
- Captive lens frame with stainless steel door retainers for easy lamp replacement.
- Optional safety cable attachment points.
- Remote ballast available.
- Tested and approved over 180° aiming range, enabling face up through face down mounting.
- Wide NEMA 7 x 6 beam spread.
- Optional vibration resistant lamp holder.
- Choice of mounting arrangements in surface, pole, right angle and crane boom (via a modified housing).

APPLICATIONS

- Hazardous locations
- Marine and watertight requirements
- Oil and gas exploration and production
- Petrochemical facilities
- Waste water treatment plants
- Pulp and paper production
- Corrosive environments
- Façade security lighting

APPROVALS

- Class I Division 2 Groups A, B, C & D
- Class I Zone 2 Groups IIA, IIB, IIB + H2 & IIC
- Type 4X
- Conforms to IP66
- Marine Outside Type Saltwater
- ABS

STANDARDS

- UL 844 - Hazardous Locations
- UL 1598A - Luminaire for Marine Vessels
- CSA - C22.2 No. 137-M1981

TECHNICAL SPECIFICATIONS

HOUSING

Copper free aluminum with an electrostatically applied white polyester powder coat finish.

WIND RATING

EPA - 2.24 at vertical.

LENS FRAME

Type 316 stainless steel.

MOUNTING BRACKETS

Type 316 stainless steel trunnion mount. Please see SPARE PARTS for additional selections.

REFLECTORS

Hammertone aluminum.

ENTRIES

One ¼" NPT.

LENS

Tempered glass.

BALLAST

Standard: Multi-tap 120/208/240/277v 60 Hz.

Optional: 220v, 347v, or 480v 60Hz, and 220v or 240v 50Hz.

Optional: Remote ballast suitable for use up to 50 feet from luminaire.

GASKET

One piece silicone.

GUARD

Optional, type 316 stainless steel.

VISOR

Optional, top or top and side, copper free aluminum with an electrostatically applied white polyester powder coat finish.

LAMP HOLDER

Mogul base, porcelain.

LAMP TYPES

High Pressure Sodium, Metal Halide* and Pulse Start Metal Halide. Luminaires supplied without lamps.

*Not available in the U.S.

ORDERING REFERENCES

PART NUMBER	LAMP TYPE	WATTAGE	WEIGHT LBS	ANSI LAMP TYPE	T-CODE	AMBIENT TEMP	SUPPLY WIRE TEMP
NHIDLA7IB	High Pressure Sodium	70w	21.0	S62	T2B	40°C	110°C
NHIDLA1IB	High Pressure Sodium	100w	23.0	S54	T2B	40°C	110°C
NHIDLA15IB	High Pressure Sodium	150w	24.0	S55	T2B	40°C	110°C
NHIDHA17IB*	Metal Halide	175w	25.0	M57	T2B	40°C	125°C
NHIDPA15IB	Pulse Start Metal Halide	150w	24.0	M102	T2B	40°C	110°C
NHIDPA17IB	Pulse Start Metal Halide	175w	25.0	M152	T2B	40°C	125°C

*Not available in the U.S.

SPECIAL OPTIONS

- F - Fused Ballast (Not for marine use)
- IR - Instant Restrike (High Pressure Sodium only)
- W* - Dual Safety Cable Attachment Points
- 225 - 220v 50Hz
- 226 - 220v 60Hz
- 245 - 240v 50Hz
- 346 - 347v 60Hz
- 486 - 480v 60Hz

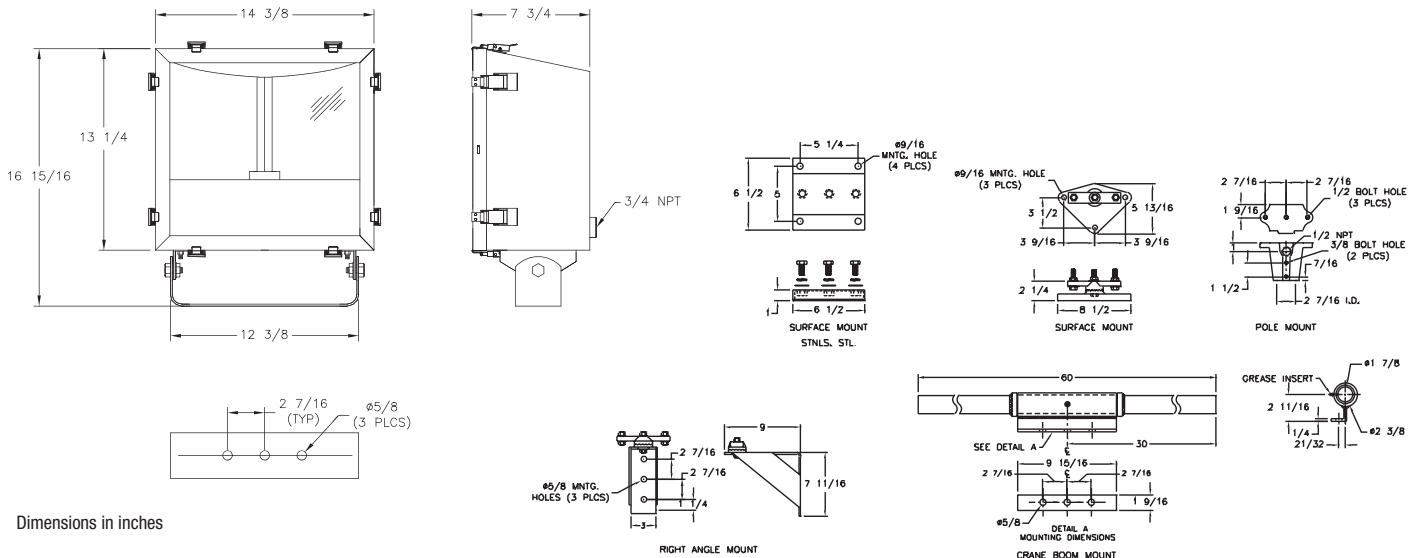
- RB* - Remote Ballast
- SP - Vibration Resistant Lamp Holder
- G* - Stainless Steel Guard
- CB* - Crane Boom Modified Housing (Includes option SP)
- TV* - Top Visor
- SV* - Top and Side Visor

*Cannot be field installed, specify at order placement.

SPARE PARTS

Part No.	Description	Part No.	Description
INX5087	BALLAST, High Pressure Sodium 70w	INX4100	LAMP HOLDER
INX5014	BALLAST, High Pressure Sodium 100w	INX2152	LENS
INX5015	BALLAST, High Pressure Sodium 150w	GKT6089-49	GASKET
INX5022	BALLAST, Metal Halide 175w	INX7007A	MOUNTING, Surface Aluminum
INX5263	BALLAST, Pulse Start Metal Halide 150w	INX7007SS	MOUNTING, Surface Stainless Steel
INX5244	BALLAST, Pulse Start Metal Halide 175w	INX7006A	MOUNTING, Pole Aluminum
INX3662	LAMP, High Pressure Sodium 70w	INX7006SS	MOUNTING, Pole Stainless Steel
INX3535	LAMP, High Pressure Sodium 100w	INX7091	MOUNTING, Pole Stainless Steel (No cable feed thru)
INX3651	LAMP, High Pressure Sodium 150w	INX7058S	MOUNTING, Right Angle
INX3551	LAMP, Metal Halide 175w	INX7001	MOUNTING, Crane Boom (Requires crane boom housing)
INX3744	LAMP, Pulse Start Metal Halide 150w	SC30H	SAFETY CABLE, 48" Stainless Steel, Snap Hook
INX3732	LAMP, Pulse Start Metal Halide 175w		

DIMENSIONS



Dimensions in inches