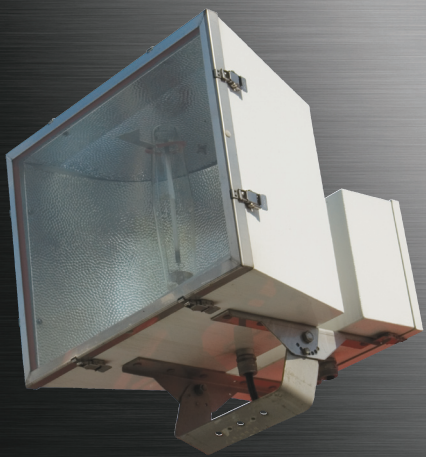


# Haz

## HazFlood Goliath 2120/a1



### FEATURES

- 1000w HID.
- Ballast gear housed in separate, attached enclosure. Allows for easy access and cool running operation.
- Field replaceable, thermal shock resistant tempered glass lens.
- High temperature silicone gaskets provide a watertight seal.
- Tool less entry via eight positive locking stainless steel latches.
- Captive lens frame with stainless steel door retainers for easy lamp replacement.
- Optional safety cable attachment points.
- Remote ballast available.
- Tested and approved over 180° aiming range, enabling face up through face down mounting.
- Very wide NEMA 7 x 7 beam spread.
- Optional vibration resistant lamp holder.
- Choice of mounting arrangements in surface, pole and crane boom (via a modified housing).

### APPLICATIONS

- Hazardous locations
- Marine and watertight requirements
- Oil and gas exploration and production
- Petrochemical facilities
- Waste water treatment plants
- Pulp and paper production
- Corrosive environments
- Façade security lighting

### APPROVALS

- Class I Division 2 Groups A, B, C & D
- Class I Zone 2 Groups IIA, IIB, IIB + H2 & IIC
- Type 4X
- Conforms to IP66
- Marine Outside Type Saltwater
- ABS

### STANDARDS

- UL 844 - Hazardous Locations
- UL 1598A - Luminaires for Marine Vessels
- CSA Class 3428 83
- CSA Class 3428 03
- CSA - C22.2 No. 30-M1986
- CSA - C22.2 No. 213-M1987

### TECHNICAL SPECIFICATIONS

#### HOUSING

Copper free aluminum with an electrostatically applied white polyester powder coat finish.

#### WIND RATING

EPA - 5.39 at vertical.

#### LENS FRAME

Type 316 stainless steel.

#### MOUNTING BRACKETS

Type 316 stainless steel trunnion mount. Please see SPARE PARTS for additional selections.

#### REFLECTORS

Hammertone aluminum.

#### ENTRIES

One  $\frac{3}{4}$ " NPT.

#### LENS

Tempered glass.

#### GASKETS

One piece silicone.

#### GUARD

Optional, type 316 stainless steel.

#### BALLAST

Standard: Multi-tap 120/208/240/277v 60Hz.

Optional: 220v, 347v, or 480v 60Hz, and 220v or 240v 50Hz.

Optional: Remote ballast suitable for use up to 50 feet from luminaire.

#### LAMP HOLDER

Mogul base, porcelain.

#### LAMP TYPES

High Pressure Sodium and Metal Halide. Luminaires supplied without lamps.

## ORDERING REFERENCES

PART NUMBER	LAMP TYPE	WATTAGE	WEIGHT LBS	ANSI LAMP TYPE	T-CODE	AMBIENT TEMP	SUPPLY WIRE TEMP
NHIDLA10IB	High Pressure Sodium	1000W	82.0	S52	T1	40°C	75°C
NHIDHA10IB	Metal Halide	1000W	74.0	M47	T1	40°C	75°C

## SPECIAL OPTIONS

- 225 - 220v 50Hz
- 226 - 220v 60Hz
- 245 - 240v 50Hz
- 346 - 347v 60Hz
- 486 - 480v 60Hz
- G\* - Stainless Steel Guard
- W\* - Dual Safety Cable Attachment Points
- RB\* - Remote Ballast
- SP - Vibration Resistant Lamp Holder
- CB\* - Crane Boom Modified Housing (Includes option SP)

\*Cannot be field installed, specify at order placement.

## SPARE PARTS

Part No.	Description
INX5027	MULTI TAP BALLAST, High Pressure Sodium
INX5031	MULTI TAP BALLAST, Metal Halide
INX5017	480V 60Hz BALLAST, High Pressure Sodium
INX5032	480V 60Hz BALLAST, Metal Halide
INX3530	LAMP, High Pressure Sodium
INX3567	LAMP, Metal Halide
GKT6089-81	GASKET, Lens
GKT6089-49	GASKET, Component Cover
INX2156	LENS
INX4004	LAMP HOLDER
INX7007A-1	MOUNTING, Surface Aluminum
INX7007SS	MOUNTING, Surface Stainless Steel
INX7006SS	MOUNTING, Pole Stainless Steel
INX7006A	MOUNTING, Pole Aluminum
INX7091	MOUNTING, Pole Stainless Steel (No cable feed thru)
INX7001	MOUNTING, Crane Boom (Requires crane boom housing)
SC30H	SAFETY CABLE, 48" Stainless Steel, Snap Hook

## DIMENSIONS

