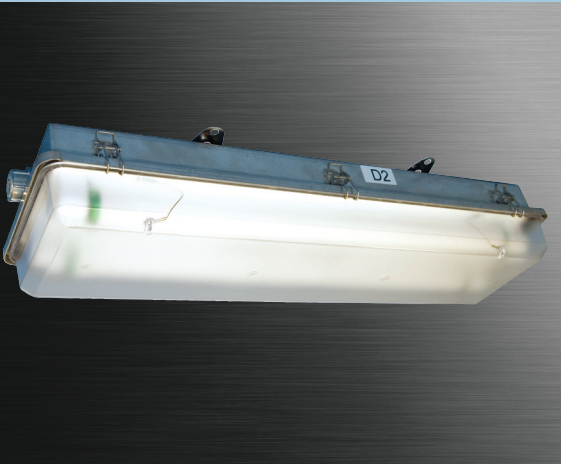


# Haz

## HazMax Intrepid/ss



### FEATURES

- Fluorescent system provides energy savings up to 50% when compared to HID.
- Multi voltage electronic ballast resistant to brownouts or voltage and frequency fluctuations.
- Stainless steel housing, latches, mounting feet and lens retainers.
- Impact resistant UV stabilized polycarbonate lens.
- Shoc♦Loc™ Bi-Pin spring loaded lamp holders for T5, T8 and T12 lamp types, provide superior resistance to shock and vibration.
- USDA compliant materials.
- Meets Canadian Processed Products Regulations C.R.C. c291.
- Neoprene gasket resists petroleum.
- Three lamp models are provided with (1) single-lamp ballast and (1) two-lamp ballast for independent switching.
- Optional self contained emergency battery backup ballasts.
- Optional certified test switch on emergency models.
- Optional long life T5 lamps available upon request (consult factory).

### APPLICATIONS

- Hazardous locations
- Marine and watertight requirements
- Dusttight requirements
- Oil and gas exploration and production
- Petrochemical facilities
- Waste water treatment plants
- Food & beverage processing facilities
- Corrosive environments

### APPROVALS

- Class I Division 2 Groups A, B, C, & D
- Class I Zone 2 Groups IIA, IIB & IIC
- Class II Division 2 Groups F & G
- Class III Type 4 Enclosure
- Type 4X
- IP66
- Marine Outside Type Saltwater
- ABS
- NSF

### STANDARDS

- UL 844 - Hazardous Locations
- UL 924 - Emergency Lighting Equipment
- UL 1598A - Luminaires for Marine Vessels
- EN 60529 - Ingress Protection
- Canadian Processed Products Regulations C.R.C. c291
- CSA - Class 3428 03
- CSA - Class 3428 83
- NSF/ANSI 2-2007 Food Contact

### TECHNICAL SPECIFICATIONS

#### HOUSING

.062 inch thick, type 304 stainless steel, optional type 316.

#### LENS

0.090 inch thick, matte polycarbonate. Optional clear polycarbonate.

#### REFLECTOR

Type 5052H32 aluminum with an electrostatically applied white polyester powder coat finish. Minimum 90% reflectance.

#### GASKET

One piece neoprene.

#### MOUNTING

Stainless steel vibration dampening feet for ceiling, wall or chain mount. Optional pendant mount version. Kits available for uni-strut/rod and pole mount.

#### LATCHES

Stainless steel over the center cam.

#### LAMP HOLDERS

Spring loaded on one end for linear lamp types.

#### ENTRIES

Two 3/4" NPT hubs, one end plugged.

#### LAMP TYPES

See ORDERING REFERENCES. Lamps not provided.

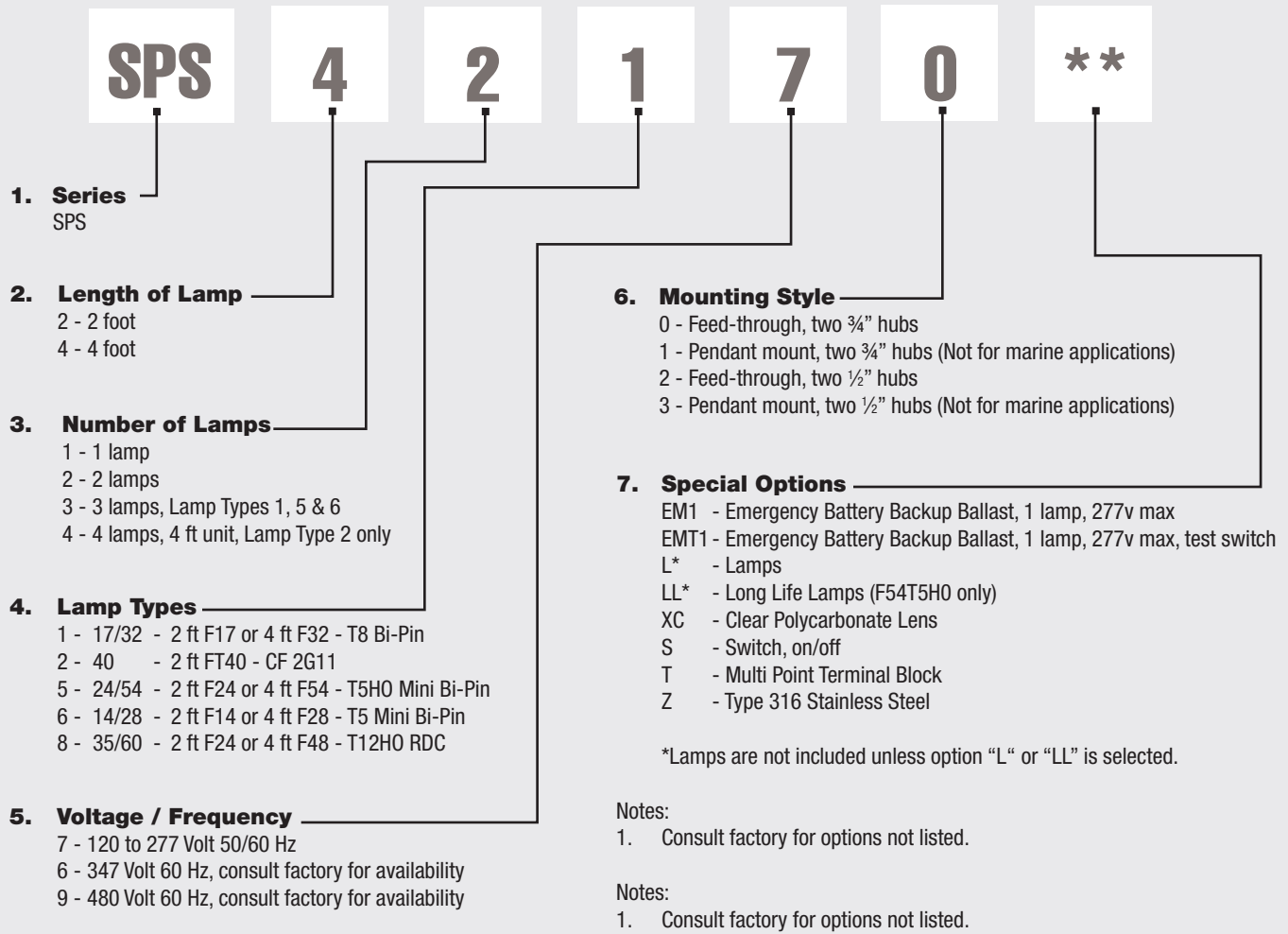
#### BALLAST

120 to 277 volt 50/60 Hz electronic, optional 347V and 480V.

#### EMERGENCY BATTERY BACKUP BALLAST

Optional, self contained 90 minute minimum for all lamp types. 120 minutes minimum for F32T8 one lamp. Starting temperature 32°F/0°C.

## ORDERING REFERENCES



## COMMONLY ORDERED LUMINAIRES & CROSS REFERENCE

Part Number	Description	Legacy P/N	Weight	
			Lbs	Kg
SPS22170	Stainless Steel 2 foot fixture 2 x F17 120-277v 50/60 Hz	FSS217D2	12.0	5.4
SPS42170	Stainless Steel 4 foot fixture 2 x F32 120-277v 50/60 Hz	FSS232D2	19.5	8.8
SPS42570	Stainless Steel 4 foot fixture 2 x F54 120-277v 50/60 Hz	FSS254D2	19.5	8.8
SPS42870	Stainless Steel 4 foot fixture 2 x F48 120-277v 50/60 Hz	FSS260D2	22.0	9.9
FX2175	Matte Polycarbonate Lens with Gasket 2 ft	FX2175	1.5	.68
FX2177	Matte Polycarbonate Lens with Gasket 4 ft	FX2177	2.7	1.22
FX2163	Clear Bottom Polycarbonate Lens with Gasket 2 ft	FX2163	1.5	.68
FX2165	Clear Bottom Polycarbonate Lens with Gasket 4 ft	FX2165	2.7	1.22
FX8014	Latches	FX8014	.1	.05

# HazMax Intrepid/ss

## SPARE PARTS

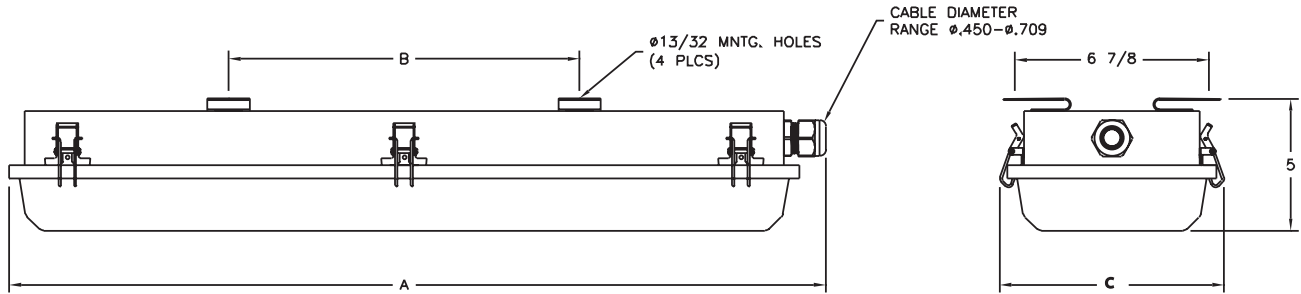
Part No.	Description		
FX5350	BALLAST 120-277V AC 50/60HZ, 1 x 14, F14T5	FX3568	LAMP, 24w, F24T5HO
FX5350	BALLAST 120-277V AC 50/60HZ, 1 x 28, F28T5	FX3567	LAMP, 54w, F54T5HO
FX5307	BALLAST 120-277V AC 50/60HZ, 1 x 24, F24T5HO	FX3577	LAMP, 54w, Long Life F54T5HO
FX5305	BALLAST 120-277V AC 50/60HZ, 1 x 54, F54T5HO	FX3528	LAMP, 17w, F17T8
FX5174	BALLAST 120-277V AC 50/60HZ, 1 x 17, F17T8	FX3527	LAMP, 32w, F32T8
FX5221	BALLAST 120-277V AC 50/60HZ, 1 x 32, F32T8	FX3565	LAMP, 44w, F48T8HO
FX5349	BALLAST 120-277V AC 50/60HZ, 1 x 44, F48T8HO	FX3507	LAMP, 35w, F24T12HO
FX5334	BALLAST 120-277V AC 50/60HZ, 1 x 35, F24T12HO	FX3505	LAMP, 60w, F48T12HO
FX5334	BALLAST 120-277V AC 50/60HZ, 1 x 60, F48T12HO	FX3533	LAMP, 40w CF, FT40 2G11
FX5272	BALLAST 120-277V AC 50/60HZ, 1 x 40 CF, FT40 2G11	FX8014	LATCH
FX5350	BALLAST 120-277V AC 50/60HZ, 2 x 14, F14T5	GKT6106-69	LENS GASKET, 2 ft. models
FX5350	BALLAST 120-277V AC 50/60HZ, 2 x 28, F28T5	GKT6106-117	LENS GASKET, 4 ft. models
FX5307	BALLAST 120-277V AC 50/60HZ, 2 x 24, F24T5HO	FX4008	LAMP HOLDER, 17w, 20w, 24w, 32w, 40w & 54w Stationary
FX5305	BALLAST 120-277V AC 50/60HZ, 2 x 54, F54T5HO	FX4009	LAMP HOLDER, 17w, 20w, 24w, 32w, 40w & 54w Spring
FX5340	BALLAST 120-277V AC 50/60HZ, 2 x 17, F17T8	FX4008SET	LAMP HOLDER, (1 ea. FX4008, FX4009)
FX5340	BALLAST 120-277V AC 50/60HZ, 2 x 32, F32T8	FX4004	LAMP HOLDER, 35w & 60w Stationary
FX5349	BALLAST 120-277V AC 50/60HZ, 2 x 44, F48T8HO	FX4005	LAMP HOLDER, 35w & 60w Spring
FX5334	BALLAST 120-277V AC 50/60HZ, 2 x 35, F24T12HO	FX4004SET	LAMP HOLDER, (1 ea. FX4004, FX4005)
FX5334	BALLAST 120-277V AC 50/60HZ, 2 x 60, F48T12HO	FX4043	LAMP HOLDER, 40w CF
FX5272	BALLAST 120-277V AC 50/60HZ, 2 x 40, FT40 2G11	FX2175	MATTE POLYCARBONATE LENS (with Gasket), 2ft. models
FX5128HDU	EMERGENCY BATTERY BACKUP BALLAST, EM1/EMT1, 120-277V for CF, T8, T8HO, T12 & T12HO	FX2177	MATTE POLYCARBONATE LENS (with Gasket), 4ft. models
FX5346HDU	EMERGENCY BATTERY BACKUP BALLAST, EM1/EMT1, 120-277V for T5, T5HO	FX2163	CLEAR POLYCARBONATE LENS (with Gasket), 2ft. models
FX3573	LAMP, 14w, F14T5	FX2165	CLEAR POLYCARBONATE LENS (with Gasket), 4ft. models
FX3574	LAMP, 28w, F28T5		

## TEMPERATURE CODES & APPROVALS

Lamp Wattage	Ballast/Socket Type	ANSI Lamp Code	Class I T-Code	Class I Division 2	Class II Division 2	Class III	Class II & III T-Code	Starting Temp	Maximum Ambient*	Supply Wire
17	T8 Bi-Pin G13	F17-T8	T5	A,B,C & D	F & G	Yes	T3C	0°F / -18°C	40°C	90°C
32	T8 Bi-Pin G13	F32-T8	T5	A,B,C & D	F & G	Yes	T3C	-20°F / -29°C	40°C	90°C
40	4 Pin 2G11	FT40 CF	T4	A,B,C & D	F & G	Yes	T3C	0°F / -18°C	40°C	90°C
24/54	T5HO Mini Bi-Pin G5	F24/F54-T5HO	T4	A,B,C & D	F & G	Yes	T3C	-20°F / -29°C	40°C	90°C
14/28	T5 Mini Bi-Pin G5	F14/F28-T5	T4	A,B,C & D	F & G	Yes	T3C	0°F / -18°C	40°C	90°C
35/60	T12HO RDC R17d	F24/F48-T12HO	T4	A,B,C & D	F & G	Yes	T3C	-20°F / -29°C	40°C	90°C

\*Consult factory for optional higher ambient models.

## DIMENSIONS



Nominal Length	Dimensions in Inches / Centimeters			Carton W x D x L Inches	Nominal Weight	
	A	B	C		Lbs	Kg
2 Foot	28.8 / 73.7	12.44 / 31.59	7.625 / 19.4	8 <sup>3</sup> / <sub>4</sub> x 6 <sup>1</sup> / <sub>4</sub> x 31 <sup>7</sup> / <sub>8</sub>	12	4.0
4 Foot	52.8 / 134.6	36.56 / 92.87	7.625 / 19.4	8 <sup>1</sup> / <sub>2</sub> x 6 x 56 <sup>1</sup> / <sub>6</sub>	19	5.9

## MOUNTING KITS

