

LIOL-A LIOL-B

LOW INTENSITY

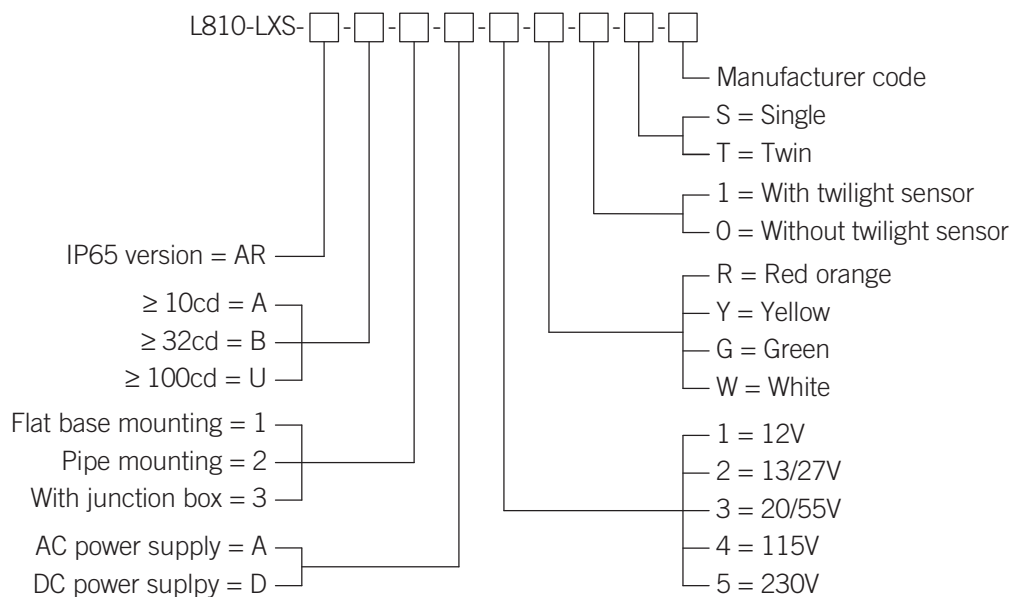


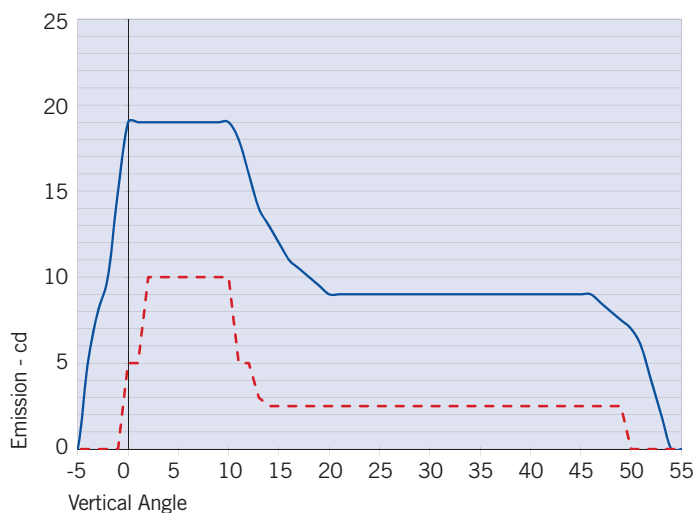
Low intensity obstruction light multiled type, compliance to ICAO type A,B FAA L-810 obstacle, night only.

- Based on led technology
- Steady burning red light
- Long life time >10+ years expectancy
- Stabilized light output

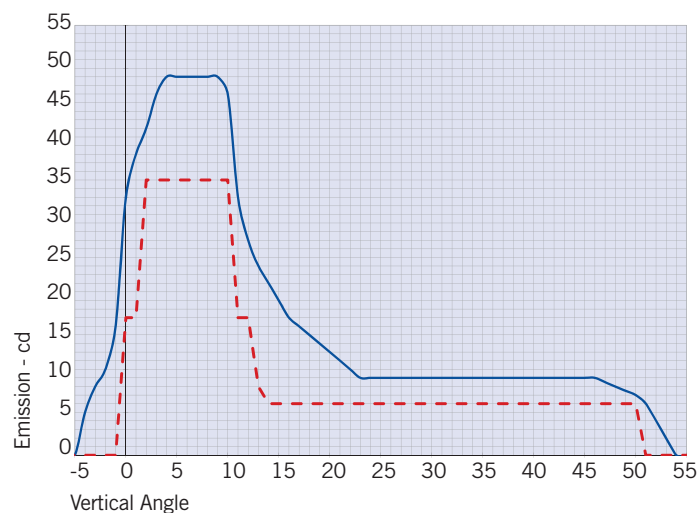


Order Code



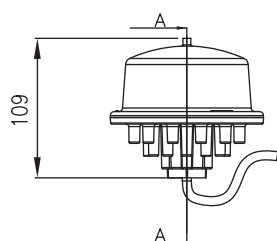


— L810-LXS-A average emission level
 - - ICAO ANNEX 14 low intensity type A
 Minimum Required Intensity

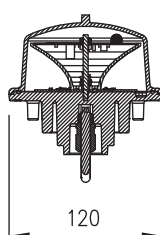


— L810-LXS-B average emission level
 - - ICAO ANNEX 14 low intensity type B
 Minimum Required Intensity

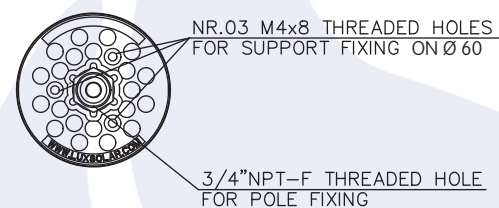
BEACON FRONT VIEW



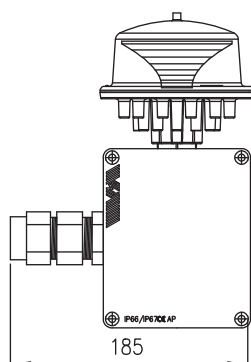
SECTION A-A



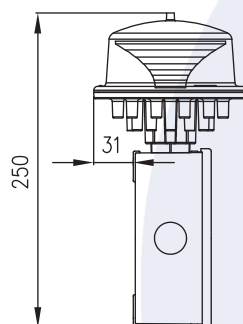
BOTTOM VIEW
FIXING DETAILS



BEACON FRONT VIEW



BEACON SIDE VIEW



FIXING DETAILS

