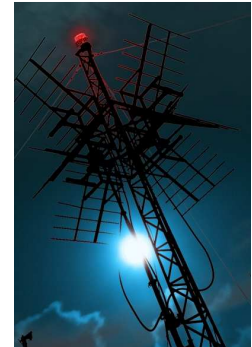


AIRCRAFT WARNING LIGHT LOW INTENSITY MULTILED TYPE  
COMPLIANCE TO CAP 168, GROUP A  
FOR OBSTACLE HIGH LESS THAN 45M



WWW.LUXSOLAR.COM

**KEY CHARACTERISTICS**

- Based on LED technology
- >10 cd steady burning NIGHT MODE
- Long life time >10+ years life expectancy
- Low consumption (1/10 of equivalent incandescent lamp)
- Stabilised light output
- Lightweight and small
- Efficient Heat Sink
- Low wind load factor
- Easy to install
- No RF-radiations
- ROI (Return Of Investment): 2 years

**OPTICAL FEATURES**

- Colour aviation NIGHT: RED
- Horizontal beam radiation 360°
- Vertical beam radiation +0° to +30° @10cd
- Optical reflector

**OPTIONS**

- Remote status control
- Execution: Ex-d IIC T6 ATEX
- Borosilicate cover protection
- Lightning protection
- Power supply 115Vac 50Hz
- Power supply 230Vac 60Hz
- Beacon support bracket
- Twilight sensor incorporated for self activated light at night
- Twin lamp

**MECHANICAL FEATURES**

- Aluminium body
- Polycarbonate UV Resistance Dome
- 1,5 meter 1mm<sup>2</sup> wires
- Cable gland type: M15 PVC
- Degree of protection IP 66
- Operating temperature range -20°C to +50°C
- Storage temperature range -25°C to +55°C
- Total Lamp Height 110mm, diameter 120mm
- Unit weight: 1Kg
- Wind load @200Km/h less then 500 N
- Installation above ¾"NPT Pole or on support 65x65 square 4MA screw

**ELECTRICAL FEATURES**

- Nominal operating voltage 24VDC
- Power consumption 5 W
- LED with constant current
- Stabilised power supply for LED

**APPLY TO**

- Flare -Airport -Stack -High buildings -Chimneys
- Tower crane -Pipe line -Bridges -radio and television towers
- Transmission lines -Wind turbines -Radar and so on

**INTERNATIONAL REGULATIONS COMPLIANCY**

- CAP168 Licensing of Aerodromes 2011
- CE MARKING

**PART NUMBERS**

- L810-LXS-CAP-A -Low Intensity Steady Burning Red Obstruction Light 10cd
- L810-LXS-CAP-AT -Low Intensity Steady Burning Red Twin Obstruction Light 10cd

