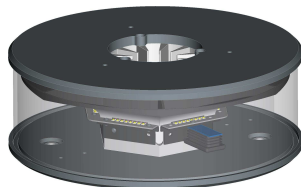


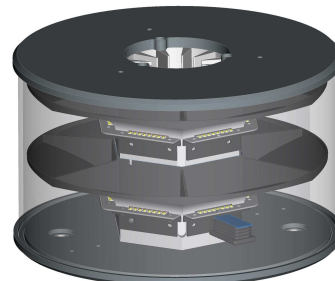
**AIRCRAFT WARNING LIGHT LOW INTENSITY MULTILED TYPE  
COMPLIANCE TO CAP 168, GROUP B  
FOR OBSTACLE HIGH LESS THAN 45M**



**SINGLE**



**TWIN**



**KEY CHARACTERISTICS**

- Based on LED technology
- >200 cd steady burning NIGHT MODE
- Long life time >10+ years life expectancy
- Low consumption (1/10 of equivalent incandescent lamp)
- Stabilised light output
- Lightweight and small
- Low wind load factor
- Easy to install
- No RF-radiations
- No inrush current
- Heatsink design improved by induced air
- ROI (Return Of Investment): 2 years

**OPTICAL FEATURES**

- Colour aviation NIGHT: RED
- Horizontal beam radiation 360°
- Vertical beam radiation +5° to +8° @200cd
- Vertical beam radiation +0° to +15° @50cd
- Lens reflector

**OPTIONS**

- Remote status control
- Execution: Ex-na II T5 ATEX 3GD
- Borosilicate cover protection
- Anti bird protection
- Lightning protection
- Arctic Kit
- Twin lamp

**MECHANICAL FEATURES**

- Anodised aluminium body
- Polycarbonate cover protection
- Terminal box for 2,5mm<sup>2</sup> wires
- Cable gland type: M20x1,5 PVC
- Degree of protection IP 66
- Operating temperature range -45°C to +85°C
- Storage temperature range -45°C to +55°C
- Total Lamp Height 150mm, diameter 300mm (single ver)
- Total Lamp Height 150mm, diameter 300mm (twin ver)
- Unit weight: 5Kg approx single (6 kg twin)
- Wind load @200Km/h less then 500 N
- Beacon support bracket

**ELECTRICAL FEATURES**

- Separate groups c/w led's individual protection
- Universal 85-264Vac nominal operating voltage
- Power consumption 15 W
- Led constant current
- LED supply current stabilised by constant current generator

**APPLY TO**

- Flare -Airport -Stack -High buildings -Chimneys
- Tower crane -Pipe line -Bridges -radio and television towers
- Transmission lines -Wind turbines -Radar and so on

**INTERNATIONAL REGULATIONS COMPLIANCY**

- CAP168 Licensing of Aerodromes 2011
- CE MARKING

**PART NUMBERS**

**L810-LXS-CAP-B**  
**L810-LXS-CAP-BT**

- Low Intensity Steady Burning Red Obstruction Light 32cd
- Low Intensity Steady Burning Red Twin Obstruction Light 32cd

